

(revision date:4/23/2014)

## ***Rhododendron: Tissue proliferation***

*Use Integrated Pest Management (IPM) for successful plant problem management.*

### ***Biology***

There is no known cause of tissue proliferation, but it is currently believed to be a genetic abnormality. A swollen area or gall develops at the base of the trunk or (more rarely) on a shoot. Otherwise, the plants appear to be healthy. Numerous small sprouts may develop from the swollen area, which may deteriorate after several years. Plants may break at the site of the swelling. Tissue proliferation is apparently noninfectious, and does not seem to be spread by grafting. Tissue proliferation is also occasionally observed on azaleas.

### ***Management Options***

#### **Non-Chemical Management**

- ~ Give plants proper cultural care to maintain good health.
- ~ Do not force into accelerated growth.

*Select non-chemical management options as your first choice!*

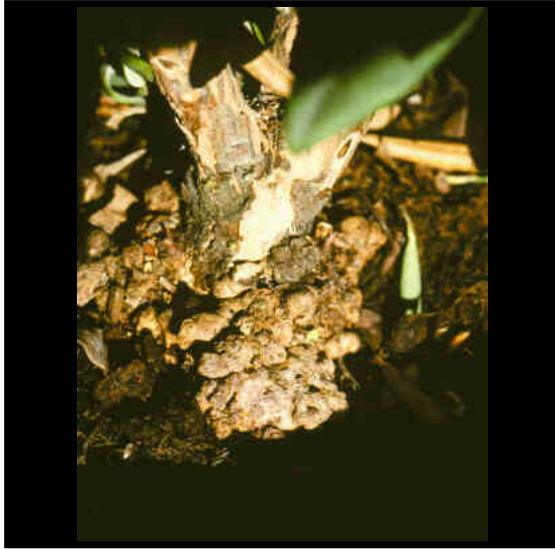
#### **Chemical Management**

***IMPORTANT: Visit Home and Garden Fact Sheets for more information on using pesticides***

None recommended

*Rhododendron: Tissue proliferation*

*Images*



~ Caption: *Rhododendron tissue proliferation*  
~ Photo by: *R.S. Byther*