

(revision date:5/20/2014)

Apple: Phytophthora fruit rot

Use Integrated Pest Management (IPM) for successful plant problem management.

Biology

Phytophthora fruit rot is caused by a soilborne fungus which can also be found in and carried by irrigation water. Infection occurs when water contacts fruit on low-hanging limbs or when overhead watering is used. Firm tan spots approximately 1" or more in diameter develop on infected fruit. If the infection moves up into the wood, a dieback of one-year-old wood resembling fire blight can occur. This fungus can also infect pears. Phytophthora fruit rot occurs sporadically and is of minor importance.

Management Options

Non-Chemical Management

- ~ Avoid overhead watering.
- ~ Reduce time fruit is wet from irrigation to less than one hour (this includes actual irrigation time as well as drying time).
- ~ Do not get water on fruit within 10 days of harvest.

Select non-chemical management options as your first choice!

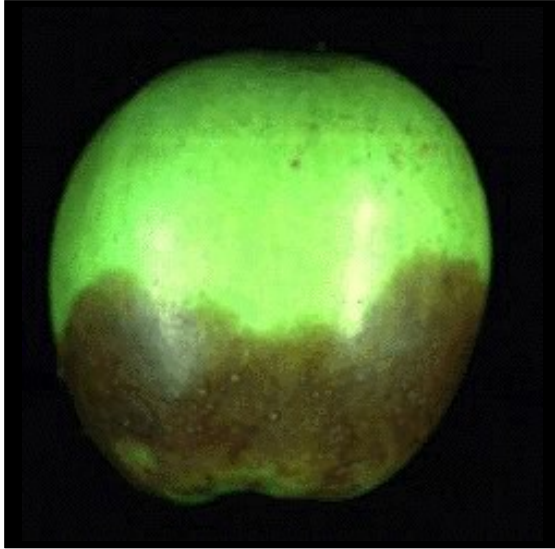
Chemical Management

IMPORTANT: Visit Home and Garden Fact Sheets for more information on using pesticides

None recommended

Apple: Phytophthora fruit rot

Images



~ Caption: *Phytophthora fruit rot*
~ Photo by: G.G. Grove