

(revision date:10/14/2016)

Weeds: Velvetgrass (Common velvetgrass)(*Holcus lanatus*)

family: Poaceae (Graminae)

cycle Perennial

plant type: Grass

Use Integrated Pest Management (IPM) for successful plant problem management.

Biology

Velvetgrass is a perennial reaching one to three feet high (if unmowed). Typically growing in small, dense clumps, velvetgrass may also spread to form large clumps, especially in lawns. Leaf blades are pointed at the tip and range from 1/8 to 3/8 inch wide. The entire plant, including leaf blades, sheaths, and stems, is hairy and soft to the touch. Plants have a grayish, velvety appearance. Pale grayish-green to purplish seed heads are branched and plumelike.

SPECIAL INFORMATION: The grayish coloration of velvetgrass causes it to appear as an obvious weed in lawns.

Habitat

Velvetgrass is a weed of lawns and pastures. In the Pacific Northwest, it is normally found west of the Cascades.

Management Options

Non-Chemical Management

~ Maintaining a healthy planting or turf area to provide competition will prevent weed establishment.

Select non-chemical management options as your first choice!

Chemical Management

IMPORTANT: Visit Home and Garden Fact Sheets for more information on using pesticides

Apply according to label instructions. Spray in spring when flowers first appear. Glyphosate products should be applied as spot treatments only! **NOTE:** Some ingredients listed here are only available in combination. Read the label carefully on combination products to make sure the product is suitable for your specific situation.

Landscape Areas	Turf Areas	Bare Ground Areas
- glyphosate - sethoxydim		- glyphosate

Weeds: Velvetgrass (Common velvetgrass)(*Holcus lanatus*)

Images



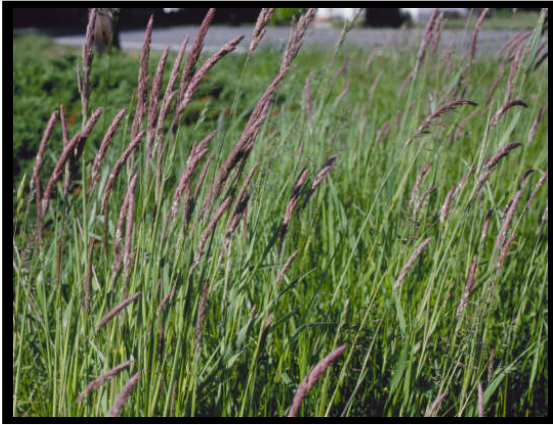
~ Caption: Velvetgrass
~ Photo by: T.W. Miller



~ Caption: Velvetgrass seedhead
~ Photo by: T.W. Miller



~ Caption: Common velvetgrass ligule
~ Photo by: B.M. Johnson



*~ Caption: Common velvetgrass
~ Photo by: T.W. Miller*



*~ Caption: Common velvetgrass
~ Photo by: T.W. Miller*