

(revision date:4/28/2014)

Madrone: Leaf spot

Use Integrated Pest Management (IPM) for successful plant problem management.

Biology

Madrone leaf spot is caused by a fungus that can overwinter on the leaves. More than 18 species of fungi have been reported to cause leaf spots on madrone. The spots are about 1/4 to 1/2 inch in diameter and appear circular or irregular with grayish centers and purplish brown margins. Small black dots, the fruiting bodies of the fungus, may be seen in the center of the spots. On the lower leaf surface, the spots are light brown with darker brown margins. Sometimes the entire leaf surface may turn brown in response to infection by certain leaf spotting fungi. The fungal infection may result in defoliation. The disease is common in western Washington, but is only a problem some years. See also Madrone: Leaf blight.

Management Options

Non-Chemical Management

~ Rake up and destroy fallen leaves.

Select non-chemical management options as your first choice!

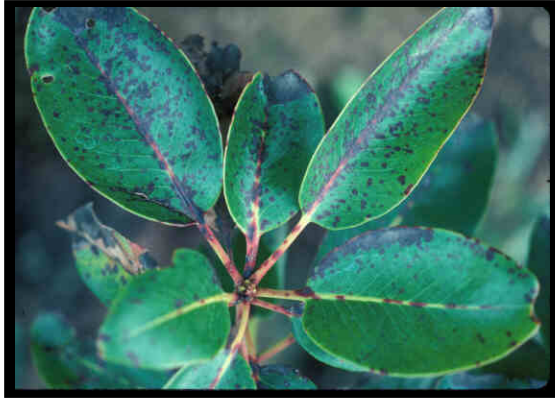
Chemical Management

IMPORTANT: Visit Home and Garden Fact Sheets for more information on using pesticides

None recommended

Madrone: Leaf spot

Images



~ Caption: Madrone leaf spots
~ Photo by: R.S. Byther