

(revision date:4/11/2018)

Cherry: Shothole (Coryneum blight)

Use Integrated Pest Management (IPM) for successful plant problem management.

Biology

Shothole is a fungal disease typically attacking leaves and fruit on cherry. Lesions on leaves are initially small, purplish, round to oval areas which expand into brown spots with light centers. The lesions are typically up to 1/4" in diameter. The infected spots on leaves often die and drop out in warm weather, giving leaves the characteristic "shothole" appearance of the disease. Fruit may develop one or more large brown spots which can involve large portions of the fruit. The fungus probably overwinters on the bark and in infected buds. Spores are easily spread by water and wind.

Management Options

Non-Chemical Management

- ~ Prune and destroy dead buds and cankered twigs if present.
- ~ Rake and destroy infected leaves.
- ~ Avoid overhead watering.

Select non-chemical management options as your first choice!

Chemical Management

IMPORTANT: Visit Home and Garden Fact Sheets for more information on using pesticides

Apply at 50% leaf fall in late autumn before heavy rains to protect leaf scars (except sulfur products). Apply chlorothalonil, IMMUNOX, or sulfur products in spring when petals fall. NOTE: Bonide Fung-onil is for spring use only. Homeowners should not make foliar applications to trees over 10 ft tall. Consult a commercial pesticide applicator for treatment of trees and shrubs over 10 ft. tall.

Listed below are examples of pesticides that are legal in Washington. Always read and follow all label directions.

- ~ Bonide Fung-onil Multi-Purpose Fungicide Conc
 - active ingredient: chlorothalonil
 - EPA reg no: 60063-9-4
- ~ Bonide Sulfur Plant Fungicide Micronized Spray or Dust RTU [Organic]
 - active ingredient: sulfur
 - EPA reg no: 4-62
- ~ GardenTech Daconil Fungicide Conc
 - active ingredient: chlorothalonil
 - EPA reg no: 67572-82-71004
- ~ Hi-Yield Snake Eyes Dusting Wettable Sulfur
 - active ingredient: sulfur
 - EPA reg no: 7401-188-34911
- ~ Lilly Miller Sulfur Dust Fungicide/Insecticide Dust or Spray
 - active ingredient: sulfur
 - EPA reg no: 802-16
- ~ Monterey Liqui-Cop Copper Fungicidal Garden Spray
 - active ingredient: copper-ammonia complex
 - EPA reg no: 54705-7
- ~ Ortho Max Garden Disease Control Conc
 - active ingredient: chlorothalonil
 - EPA reg no: 239-2522
- ~ Spectracide IMMUNOX Multi-Purpose Fungicide Spray Conc
 - active ingredient: myclobutanil
 - EPA reg no: 9688-123-8845
- ~ This list may not include all products registered for this use.

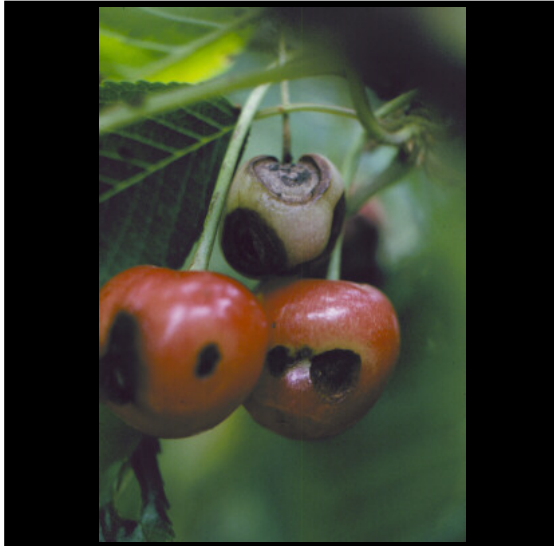
Cherry: Shothole (Coryneum blight)

Images



~ Caption: Coryneum blight symptoms on leaves and fruit

~ Photo by: R.S. Byther



~ Caption: Coryneum blight symptoms on fruit

~ Photo by: R.S. Byther