

(revision date:4/30/2013)

## ***Common Diseases: Viruses***

*Use Integrated Pest Management (IPM) for successful plant problem management.*

### ***Biology***

Viruses are submicroscopic in size, which means that they can be seen only with an electron microscope. Viruses are introduced into host plants by various means, including vectors such as insects, fungi, and nematodes. Tools can spread some viral diseases. Tobacco users can even transfer the tobacco mosaic virus from their hands to plant tissue. Leaf and fruit mosaics, stunting, severe distortion, chlorosis along veins and ringspots may be symptoms of virus infections.

### ***Management Options***

#### **Non-Chemical Management**

- ~ Destroy infected plants if the virus is transmissible.
- ~ Purchase disease-free plants.

*Select non-chemical management options as your first choice!*

#### **Chemical Management**

***IMPORTANT: Visit Home and Garden Fact Sheets for more information on using pesticides***

None recommended

*Common Diseases: Viruses*

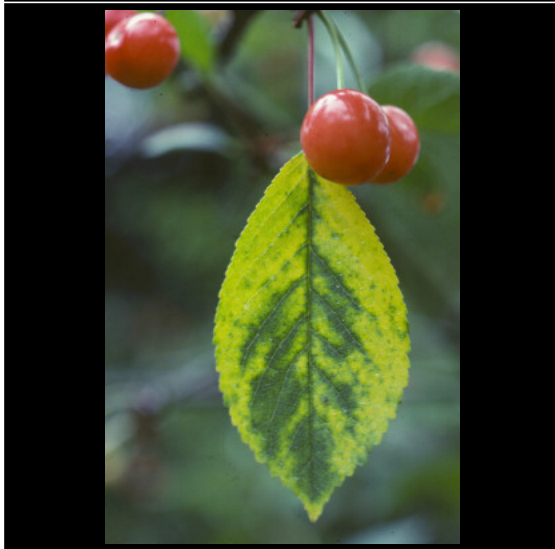
*Images*



~ Caption: *Cherry mottle leaf virus symptoms*  
~ Photo by: *R.S. Byther*



~ Caption: *Impatiens necrotic spot virus on begonia*  
~ Photo by: *R.S. Byther*



~ Caption: *Sour cherry virus symptoms*  
~ Photo by: *R.S. Byther*



~ *Caption: Bean yellow mosaic virus symptoms*  
~ *Photo by: R.S. Byther*



~ *Caption: Virus "rat-tail" symptoms*  
~ *Photo by: R.S. Byther*



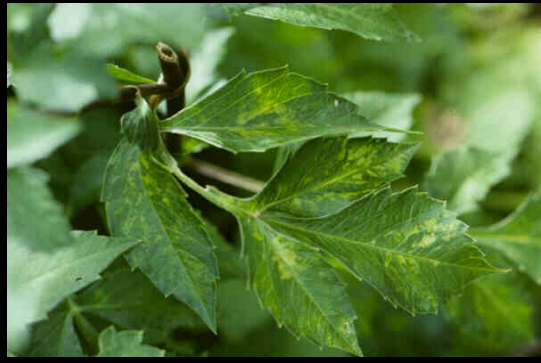
~ *Caption: Vein-clearing symptom of virus infection*  
~ *Photo by: R.S. Byther*



~ *Caption: Tomato spotted wilt virus symptoms on dahlia*  
~ *Photo by: R.S. Byther*



~ Caption: Virus symptoms on dahlia  
~ Photo by: R.S. Byther



~ Caption: Dahlia mosaic virus symptoms  
~ Photo by: R.S. Byther



~ Caption: Tobacco ringspot virus/Arabis mosaic virus on Forsythia  
~ Photo by: R.S. Byther



~ Caption: Geranium virus symptoms  
~ Photo by: R.S. Byther



~ Caption: *Kalmia necrotic ringspot virus*  
~ Photo by: R.S. Byther



~ Caption: *Pea mosaic virus*  
~ Photo by: R.S. Byther



~ Caption: *Pear stony pit virus symptoms*  
~ Photo by: R.S. Byther



~ Caption: *Rhododendron necrotic ringspot virus*  
~ Photo by: R.S. Byther



~ Caption: Tulip break (virus)  
~ Photo by: R.S. Byther



~ Caption: Prunus virus  
~ Photo by: R.S. Byther



~ Caption: Rose mosaic vein-clearing symptom  
~ Photo by: R.S. Byther



~ Caption: Rose spring dwarf virus  
~ Photo by: R.S. Byther



~ *Caption: Tulip break (virus)*  
~ *Photo by: R.S. Byther*