

(revision date:4/30/2013)

Common Cultural: Air pollution

Use Integrated Pest Management (IPM) for successful plant problem management.

Biology

Generally, air pollution damage in the Pacific Northwest has been considered limited. Sulfur dioxide damage from large industrial emissions has been known to cause interveinal bleaching on dahlia, interveinal spotting on lilac, and needle banding on pine.

Management Options

Non-Chemical Management

Select non-chemical management options as your first choice!

Chemical Management

IMPORTANT: Visit Home and Garden Fact Sheets for more information on using pesticides

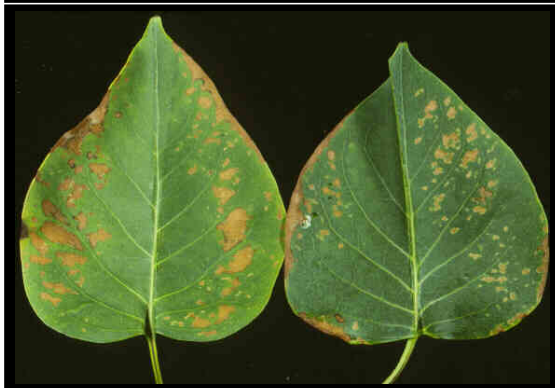
None recommended

Common Cultural: Air pollution

Images



*~ Caption: Air pollution damage on dahlia
~ Photo by: R.S. Byther*



*~ Caption: Air pollution damage on lilac
~ Photo by: R.S. Byther*



*~ Caption: Air pollution damage on pine
~ Photo by: R.S. Byther*